

# RESIDENTIAL LOT WITH THE BEST VIEWS

## THE THERMAL CLUB | LOT #51



**86801 NEWTON WAY, THERMAL, CA**

### FEATURES

- One of the Best Views in the Entire Thermal Club
- Located at the end of Cul-de-sac
- Amazing Views of the Track and Surrounding Mountains
- Premium Lot Location on the Track
- The Thermal Club Motor sports Facility has 5 Miles of Private Pavement and Luxury Amenities Including Two Clubhouses, Meeting and Banquet Building, Full Service Spa, Tennis, Pickle ball, Kids Club, Karting, Racing, Driver Training, Storage and Repair Facilities.
- Purchasing a Home at The Thermal Club Requires purchasing a membership

**PRICE: \$1,500,000**

### VIEW OF THE TRACK FROM LOT



**SUSAN HARVEY**

DRE #00957590  
susan@dppllc.com  
Direct: 760.766.0512  
Cell: 760.250.8992



**PAULA TURNER**

DRE #00702492  
paula@dppllc.com  
Direct: 760.766.0511  
Cell: 760.578.6564



# RESIDENTIAL LOT WITH THE BEST VIEWS

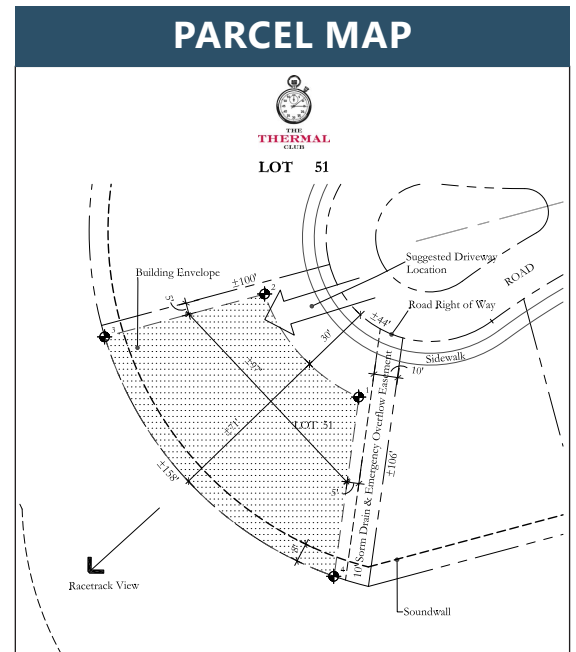
## SITE AMENITIES/AERIAL



**86801 NEWTON WAY, THERMAL, CA**

### SITE AMENITIES

- **Location:** 86801 Newton Way, Thermal, CA 92274
- **APN:** 759-220-015
- **Parcel Size:** 0.25 Acres (10,890 SF)
- **Utilities:**
  - Electrical:** In Street
  - Domestic Water:** In Street
  - Sewer:** In Street
- **Current Use:** Vacant Lot
- **Terms:** Cash
- **Showing:** 24 Hour Notice | Call First
- **Comments:** Homeownership requires a membership at the club. Standard family membership has a one-time initiation fee of \$175,000 plus membership dues of \$2,400/month and a small \$250/month ground maintenance fee per lot per month.



760.360.8200 | DesertPacificProperties.com | 77-933 Las Montanas Rd. Suite 101 Palm Desert CA 92211

Disclaimer: The information provided has been obtained from sources believed reliable. While we do not doubt its accuracy, we have not verified it and make no guarantee, warrant or representation about it. Buyer is strongly encouraged to independently confirm its accuracy and completeness. Any projections, opinions, assumptions or estimates used are for example only, and may not accurately represent the current or future performance of the property.