

8,561 SF MODERN LUXURY VILLA

THE THERMAL CLUB | VILLA #65



61605 GOODWOOD DR (VILLA #65), THERMAL, CA

FEATURES

- Fully Furnished 5 Beds/5 Baths/1 powder room
- Garage Space for 10 Cars
- Amazing Views of the Track and Surrounding Mountains
- Premium Lot Location on the Track
- The Thermal Club Motorsports facility has 5 miles of private pavement and luxury amenities including two clubhouses, three restaurants, meeting and banquet building, full service spa, fitness center, a highly appointed 48-villa hotel, tennis, pickleball, kids club, karting, racing, driver training, storage and repair facilities
- Purchasing a Villa at The Thermal Club Requires purchasing a membership

PRICE: \$4,750,000

VIEW OF THE TRACK FROM DECK




Desert Pacific
PROPERTIES, INC.
COMMERCIAL REAL ESTATE



SUSAN HARVEY

DRE #00957590
susan@dppllc.com
Cell: 760.250.8992



EMILY HARVEY

DRE #02229612
emily@dppllc.com
Cell: 760.636.3500

DesertPacificProperties.com 760.360.8200



61605 GOODWOOD DR (VILLA #65), THERMAL, CA

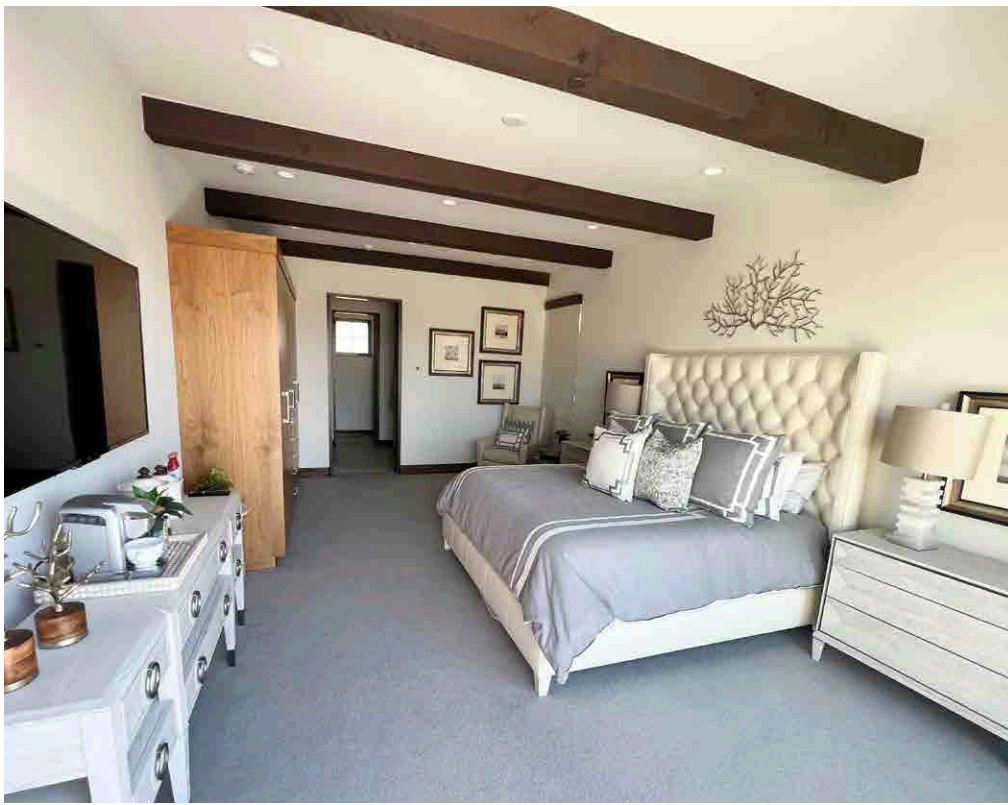


Welcome to the Thermal Club, the World Class Motorsports heaven

- Thermal Club Amenities:** The Thermal Club Motorsports facility has 5 miles of private pavement and luxury amenities including two clubhouses, three restaurants, meeting and banquet building, full service spa, fitness center, a highly appointed 48-villa hotel, tennis, pickleball, kids club, karting, racing, driver training, storage and repair facilities.
- Thermal Club Membership:** Purchasing a Villa/Lot requires a membership at the club. Standard family membership has a one-time initiation fee of \$200,000 plus membership dues of \$2,400/month and a small \$350/month ground maintenance fee per lot per month.

760.360.8200 | DesertPacificProperties.com | 77-933 Las Montanas Rd. Suite 101 Palm Desert CA 92211

Disclaimer: The information provided has been obtained from sources believed reliable. While we do not doubt its accuracy, we have not verified it and make no guarantee, warrant or representation about it. Buyer is strongly encouraged to independently confirm its accuracy and completeness. Any projections, opinions assumptions or estimates used are for example only, and may not accurately represent the current or future performance of the property.



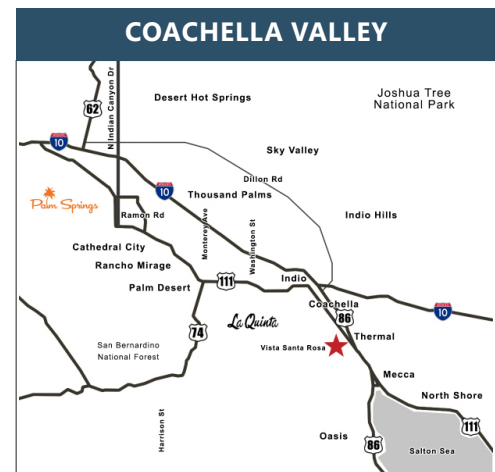
BUILDING DETAILS

- **Building Size (Total):** 8,561* SF
- **Living Area:** 4,141* SF
- **Garage Area:** 2,924* SF
- **Garage Door Size:** 19' x 14'*
- **Year Built:** 2016
- **Stories:** 3
- **Elevator:** Yes
- **Garage Space:** Approximately 10 cars
- **Rooms:** 5 bedrooms / 5 baths / 1 powder room

***Disclaimer:** We cannot guarantee the accuracy or square footage, lot size or other information concerning the condition or features of property provided by the Seller or obtained from public records or other sources. The Buyer is advised to independently verify the accuracy of all information through personal and professional inspections.

SITE DETAILS

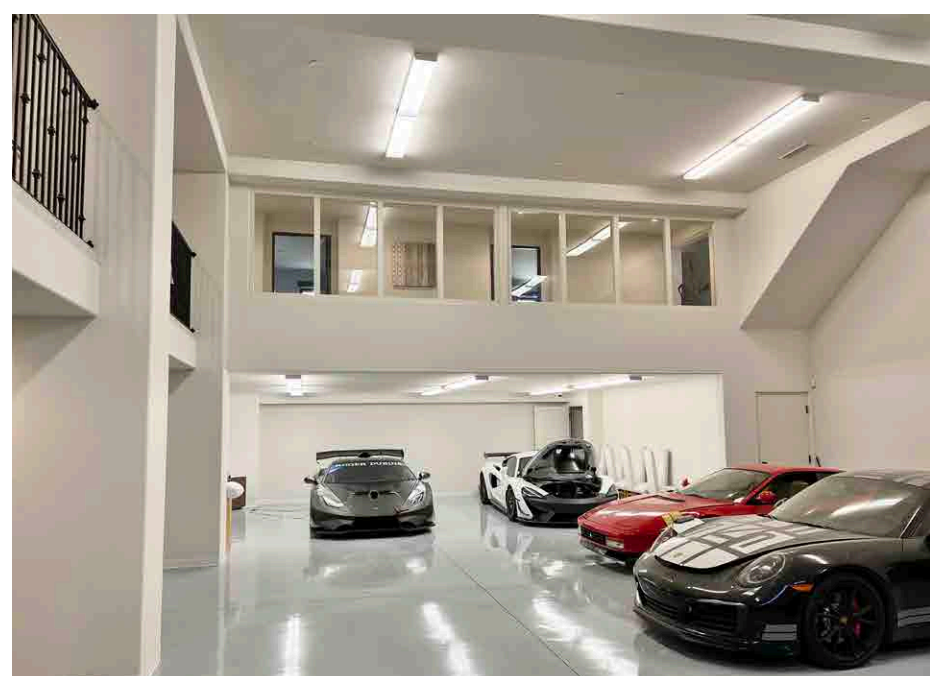
- **Location:** 61605 Goodwood Drive, Thermal, CA 92274
- **APN:** 759-230-002
- **Parcel Size (According to County Assessor's Information):** 0.21 Acres (9,148 SF)
- **Terms:** Cash
- **Showing:** 24 Hour Notice | Call To Make An Appointment
- **Comments:** Purchasing a Villa requires a membership at the club. Standard family membership has a one-time initiation fee of \$200,000 plus membership dues of \$2,400/month and a \$350/month ground maintenance fee per lot per month.



VICINITY MAP

760.360.8200 | DesertPacificProperties.com | 77-933 Las Montanas Rd. Suite 101 Palm Desert CA 92211

Disclaimer: The information provided has been obtained from sources believed reliable. While we do not doubt its accuracy, we have not verified it and make no guarantee, warrant or representation about it. Buyer is strongly encouraged to independently confirm its accuracy and completeness. Any projections, opinions assumptions or estimates used are for example only, and may not accurately represent the current or future performance of the property.



760.360.8200 | DesertPacificProperties.com | 77-933 Las Montanas Rd. Suite 101 Palm Desert CA 92211

Disclaimer: The information provided has been obtained from sources believed reliable. While we do not doubt its accuracy, we have not verified it and make no guarantee, warrant or representation about it. Buyer is strongly encouraged to independently confirm its accuracy and completeness. Any projections, opinions assumptions or estimates used are for example only, and may not accurately represent the current or future performance of the property.