



61680 FULLERTON DR (VILLA #35A), THERMAL, CA

FEATURES

- Beautifully appointed Villa with a premium “Off Track” location
- Fully furnished approximately 7,513 SF with 2 beds, 3 baths, 1 powder room, 1 office, and 3 separate living rooms
- Garage space for 10 cars, car service lift, and a hydraulic lift
- Amazing views of the track and surrounding mountains
- The Thermal Club Motorsports facility has 5 miles of private pavement and luxury amenities including two clubhouses, three restaurants, meeting and banquet building, full service spa, fitness center, a highly appointed 48-villa hotel, tennis, pickleball, kids club, karting, racing, driver training, storage and repair facilities
- Purchasing a Villa at The Thermal Club requires purchasing a membership

PRICE: \$3,750,000

VIEW OF THE GARAGE



04/22/24 LO



SUSAN HARVEY

DRE #00957590
susan@dppllc.com
Cell: 760.250.8992



EMILY HARVEY

DRE #02229612
emily@dppllc.com
Cell: 760.636.3500

DesertPacificProperties.com 760.360.8200



61680 FULLERTON DR (VILLA #35A), THERMAL, CA

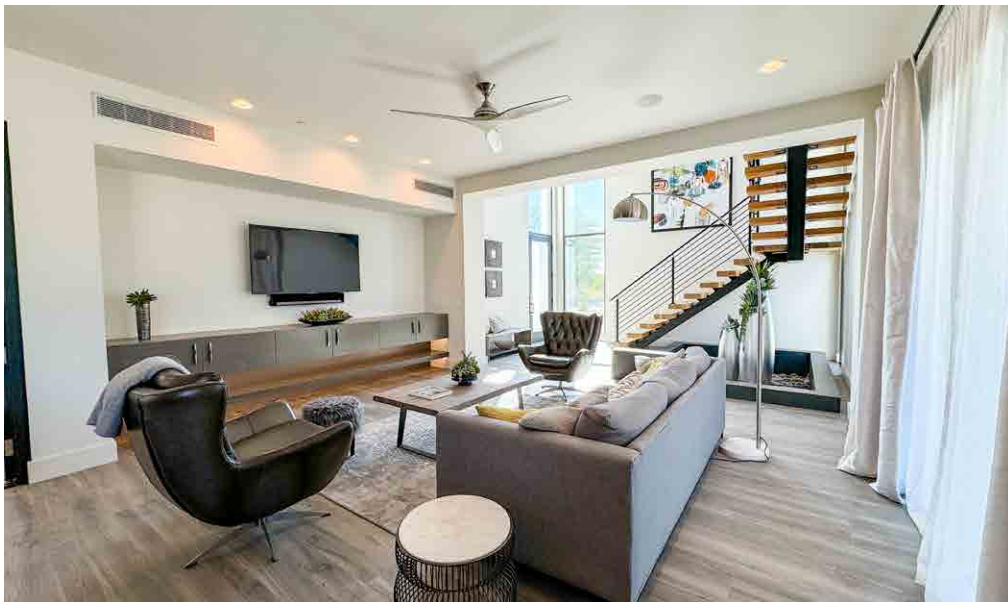


Welcome to the Thermal Club, the World Class Motorsports heaven

- **Thermal Club Amenities:** The Thermal Club Motorsports facility has 5 miles of private pavement and luxury amenities including two clubhouses, three restaurants, meeting and banquet building, full service spa, fitness center, a highly appointed 48-villa hotel, tennis, pickleball, kids club, karting, racing, driver training, storage and repair facilities.
- **Thermal Club Membership:** Purchasing a Villa/Lot requires a membership at the club. Standard family membership has a one-time initiation fee of \$200,000 plus membership dues of \$2,400/month and a small \$350/month ground maintenance fee per lot per month.

760.360.8200 | DesertPacificProperties.com | 77-933 Las Montanas Rd. Suite 101 Palm Desert CA 92211

Disclaimer: The information provided has been obtained from sources believed reliable. While we do not doubt its accuracy, we have not verified it and make no guarantee, warrant or representation about it. Buyer is strongly encouraged to independently confirm its accuracy and completeness. Any projections, opinions assumptions or estimates used are for example only, and may not accurately represent the current or future performance of the property.



■ **Comments:** Welcome to your automotive oasis at 61680 Fullerton Drive, where luxury meets the thrill of the track. Nestled within the prestigious confines of the Thermal Club, this exquisite home offers the ultimate in automotive lifestyle. Experience the perfect fusion of elegant design and high-speed excitement, with a custom-built residence that seamlessly integrates with the world-class motorsports facilities.

This stunning, fully furnished, home boasts modern architectural brilliance and offers the discerning enthusiast an exclusive retreat. Unwind in the lap of luxury with spacious living areas, high-end finishes, and breathtaking views. The 2-bedroom, 3.5-bathroom home on an oversized lot and is designed with privacy in mind featuring a state of the art garage and showroom for your prized car collection. Don't miss this rare opportunity to own a slice of automotive paradise in the heart of the desert.

BUILDING DETAILS

- **Building Size (Total):** 7,513* SF
- **Living Area:** 4,000* SF
- **Garage Area:** 3,000* SF
- **Garage Door Size:** 15.5' x 14'*
- **Year Built:** 2019
- **Stories:** Two (2)
- **Garage Spaces:** Approximately 10 cars
- **Rooms:** 2 bedrooms / 3 baths / 1 half bath / 1 office

SITE DETAILS

- **Location:** Property is located at 61680 Fullerton Dr, Thermal, CA 92274
- **APN:** 759-290-019
- **Parcel Size (According to County Assessor Information):** .32 AC (13,939 SF)
- **Terms:** Cash
- **Showing:** 24 Hour Notice | Call To Make An Appointment

SCAN OR CLICK THE QR CODES



VIRTUAL 3D TOUR

Walk in and around the property using our custom Virtual 3D Tours.

PROPERTY VIDEO

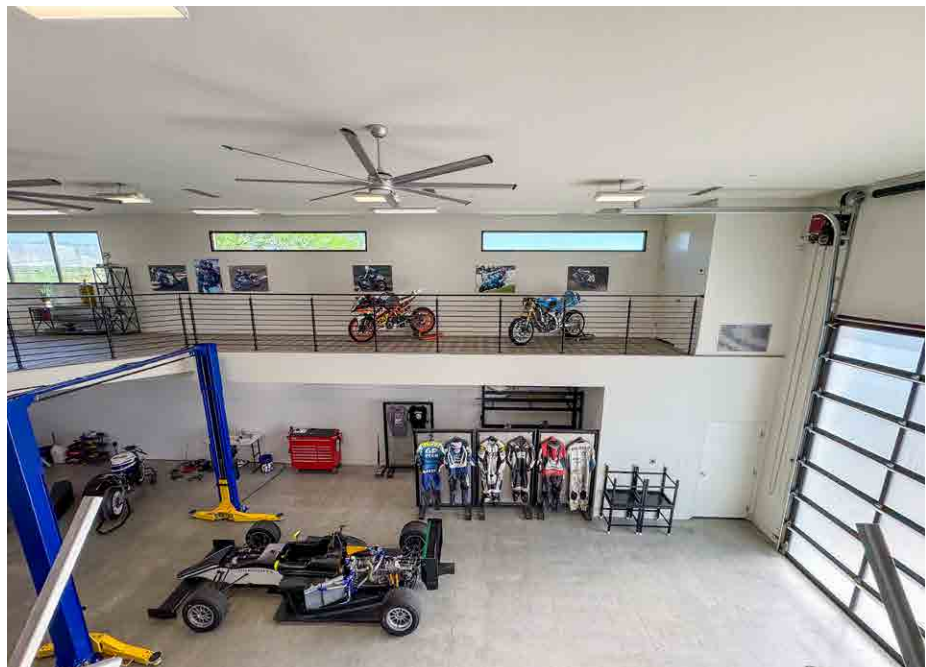
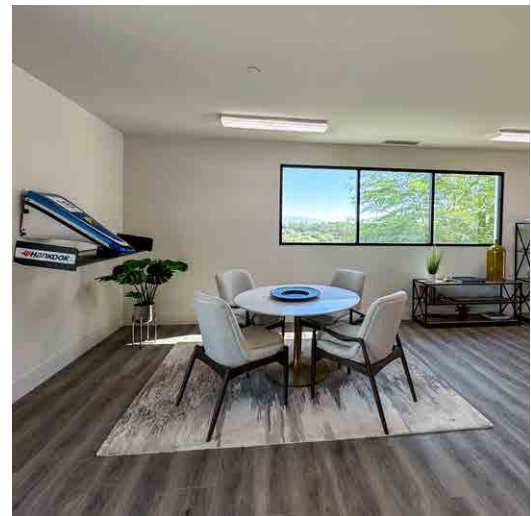
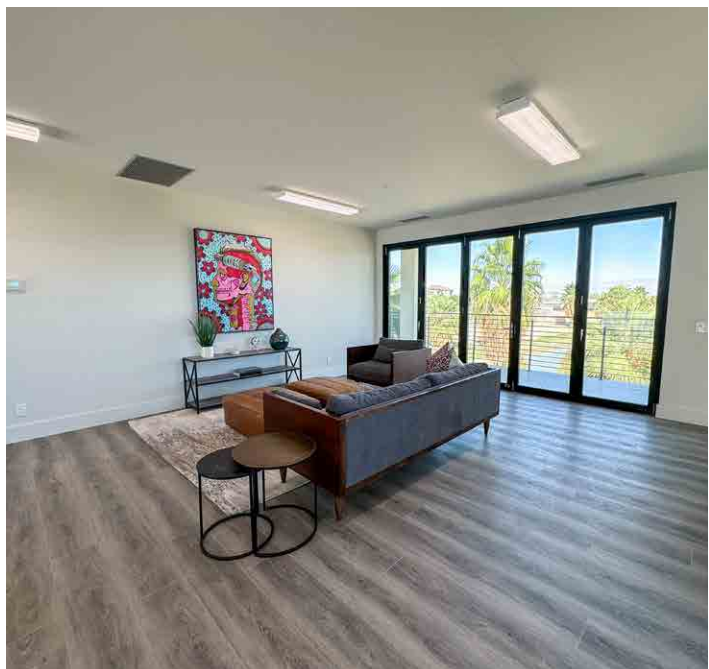
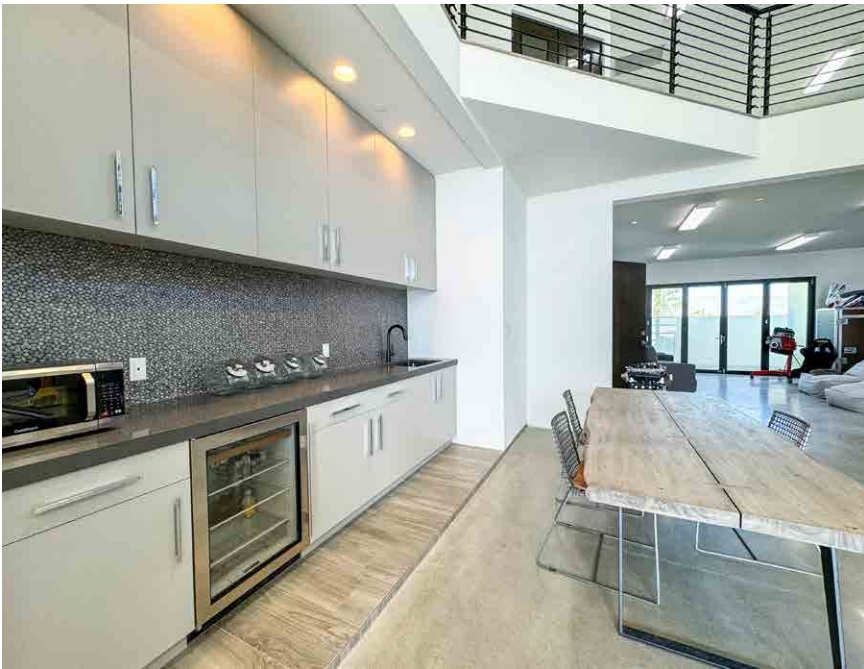
Take a look at a video of the inside of the property along with square footage.



***Disclaimer:** We cannot guarantee the accuracy or square footage, lot size or other information concerning the condition or features of property provided by the Seller or obtained from public records or other sources. The Buyer is advised to independently verify the accuracy of all information through personal and professional inspections.

760.360.8200 | DesertPacificProperties.com | 77-933 Las Montanas Rd. Suite 101 Palm Desert CA 92211

Disclaimer: The information provided has been obtained from sources believed reliable. While we do not doubt its accuracy, we have not verified it and make no guarantee, warrant or representation about it. Buyer is strongly encouraged to independently confirm its accuracy and completeness. Any projections, opinions assumptions or estimates used are for example only, and may not accurately represent the current or future performance of the property.



760.360.8200 | DesertPacificProperties.com | 77-933 Las Montanas Rd. Suite 101 Palm Desert CA 92211

Disclaimer: The information provided has been obtained from sources believed reliable. While we do not doubt its accuracy, we have not verified it and make no guarantee, warrant or representation about it. Buyer is strongly encouraged to independently confirm its accuracy and completeness. Any projections, opinions assumptions or estimates used are for example only, and may not accurately represent the current or future performance of the property.