



VILLA RENDERING

61006 & 61030 WATKINS GLEN DRIVE (VILLA 1A & 2A), THERMAL, CA

FEATURES

- Beautifully appointed Villa with a premium “Off Track” location on an oversized double lot
- Approximately 12,665 SF with 4 beds, 4 full baths, 2 powder rooms, elevator, butler’s pantry, and separate primary suite wing, accessible via a sky bridge
- Two garages totaling 3,950 SF with ample space for an auto lover’s collection
- Amazing entertainer’s backyard including custom designed pool with tanning shelf and retractable shade structure
- The Thermal Club Motorsports facility has 5 miles of private pavement and luxury amenities including two clubhouses, three restaurants, meeting and banquet building, full service spa, fitness center, a highly appointed 48-villa hotel, tennis, pickleball, kids club, karting, racing, driver training, storage and repair facilities
- Purchasing a Villa at The Thermal Club requires purchasing a membership

PRICE: \$8,750,000



10/28/24 JC



SUSAN HARVEY

DRE #00957590
susan@dppllc.com
Cell: 760.250.8992



EMILY HARVEY

DRE #02229612
emily@dppllc.com
Cell: 760.636.3500

DesertPacificProperties.com 760.360.8200



61006 & 61030 WATKINS GLEN DRIVE (VILLA 1A & 2A), THERMAL, CA



Welcome to the Thermal Club, the World Class Motorsports heaven

- **Thermal Club Amenities:** The Thermal Club Motorsports facility has 5 miles of private pavement and luxury amenities including two clubhouses, three restaurants, meeting and banquet building, full service spa, fitness center, a highly appointed 48-villa hotel, tennis, pickleball, kids club, karting, racing, driver training, storage and repair facilities.
- **Thermal Club Membership:** Purchasing a Villa/Lot requires a membership at the club. Standard family membership has a one-time initiation fee of \$200,000 plus membership dues of \$2,400/month and a small \$350/month ground maintenance fee per lot per month.

760.360.8200 | DesertPacificProperties.com | 44267 Monterey Ave., Ste. A, Palm Desert CA 92260

Disclaimer: The information provided has been obtained from sources believed reliable. While we do not doubt its accuracy, we have not verified it and make no guarantee, warrant or representation about it. Buyer is strongly encouraged to independently confirm its accuracy and completeness. Any projections, opinions assumptions or estimates used are for example only, and may not accurately represent the current or future performance of the property.



Comments: Nestled within the prestigious confines of the Thermal Club, this magnificent high-end villa is a true masterpiece designed for those with an appreciation for luxury and automobiles alike. Spanning two levels and elevator-served, this villa seamlessly blends opulence with functionality, offering unparalleled comfort and world-class amenities. Boasting 4 spacious bedrooms, 4 lavish full bathrooms, and 2 half bathrooms, each with designer finishes and custom details, the villa provides a serene retreat for family and guests.

The expansive living areas offer an ideal setting for both relaxation and entertaining, with open-concept spaces bathed in natural light, and high-end finishes that exude sophistication. A private wing dedicated exclusively to the primary suite offers a sanctuary-like retreat, with a spacious bedroom, luxe bath, and ample walk-in closets. The primary suite is connected to the rest of the villa via a spectacular sky bridge, offering breathtaking views as it links the two sides of the villa. Two custom-designed garages with space to house multiple luxury vehicles is complemented by sophisticated design elements and ample storage. The outdoor oasis includes a stunning pool surrounded by elegant landscaping, offering the perfect place to unwind or host gatherings. Whether relaxing poolside or enjoying your private car collection, this villa caters to those with a penchant for the finer things in life.

BUILDING DETAILS

- **Building Size (Total):** 12,665* SF
- **Living Area:** 5,500* SF
- **Garage Area:** 3,950* SF
- **Garage Door Size:** 16'X14'*
- **Year Built:** 2023
- **Stories:** Two (2)
- **Garage Spaces:** Approximately 11 cars
- **Rooms:** 4 bedrooms / 4 full baths / 2 half baths

SITE DETAILS

- **Location:** Property is located at 61006 & 61030 Watkins Glen Drive, Thermal, CA 92274
- **APN:** 759-280-021
- **Parcel Size (According to County Assessor Information):** 18,295 SF (0.42 AC)
- **Terms:** Cash
- **Showing:** 24 Hour Notice | Call To Make An Appointment

SCAN OR CLICK THE QR CODES

COMING
SOON

VIRTUAL 3D TOUR

Walk in and around the property using our custom Virtual 3D Tours.

PROPERTY VIDEO

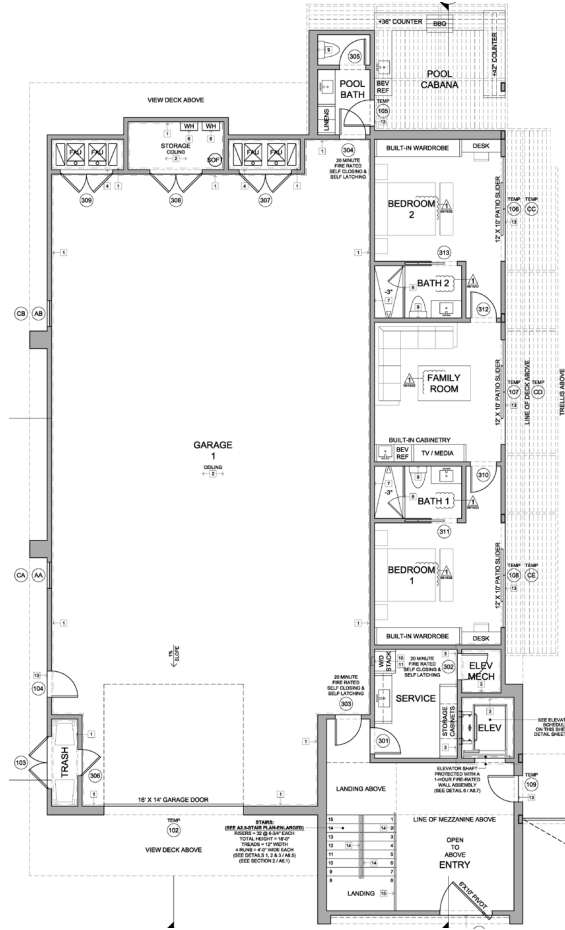
Take a look at a video of the inside of the property along with square footage.

COMING
SOON

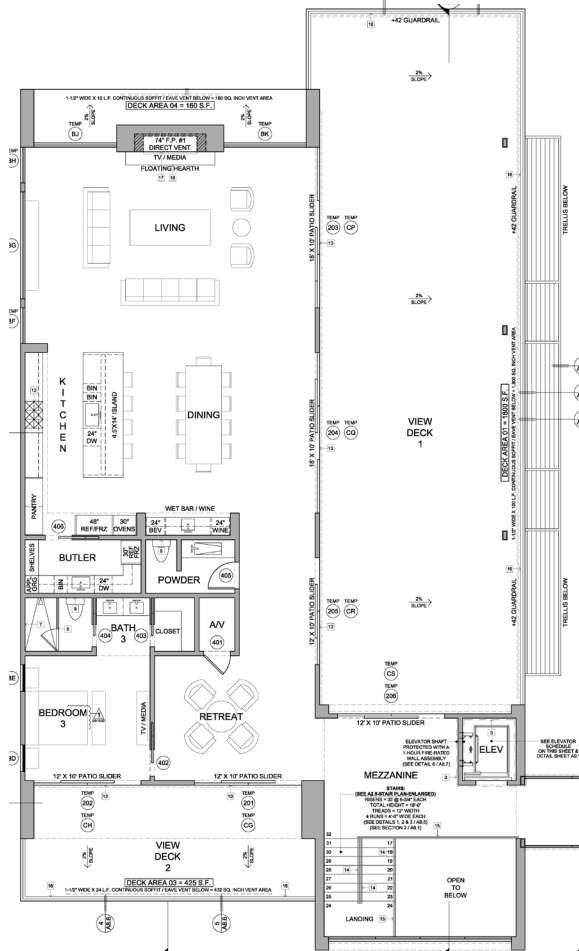
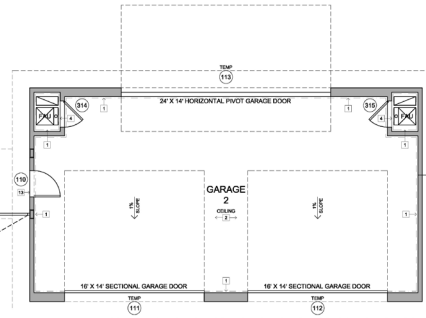
***Disclaimer:** We cannot guarantee the accuracy or square footage, lot size or other information concerning the condition or features of property provided by the Seller or obtained from public records or other sources. The Buyer is advised to independently verify the accuracy of all information through personal and professional inspections.

760.360.8200 | DesertPacificProperties.com | 44267 Monterey Ave., Ste. A, Palm Desert CA 92260

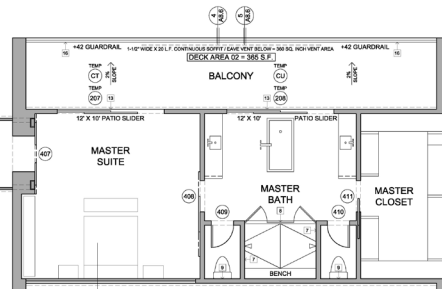
Disclaimer: The information provided has been obtained from sources believed reliable. While we do not doubt its accuracy, we have not verified it and make no guarantee, warrant or representation about it. Buyer is strongly encouraged to independently confirm its accuracy and completeness. Any projections, opinions assumptions or estimates used are for example only, and may not accurately represent the current or future performance of the property.



FLOOR PLAN LEVEL 1



FLOOR PLAN LEVEL 2



760.360.8200 | DesertPacificProperties.com | 44267 Monterey Ave., Ste. A, Palm Desert CA 92260

Disclaimer: The information provided has been obtained from sources believed reliable. While we do not doubt its accuracy, we have not verified it and make no guarantee, warrant or representation about it. Buyer is strongly encouraged to independently confirm its accuracy and completeness. Any projections, opinions assumptions or estimates used are for example only, and may not accurately represent the current or future performance of the property.