



86828 ROGERS WAY (VILLA #21), THERMAL, CA

FEATURES

- Sophisticated and fully furnished villa with 2 bedrooms, 3.5 bathrooms, and elevator located within The Thermal Club. Total SF includes garage SF
- Situated on the track with spectacular views
- Spacious balcony/viewing deck
- Primary suite features floor-to-ceiling windows perfect for viewing the track
- Large 12-car garage with 4 garage lifts
- Room to add a second bedroom on to the casita and the possibility to add a loft bedroom in garage
- The Thermal Club Motorsports facility has 5 miles of private pavement and luxury amenities including two clubhouses, three restaurants, meeting and banquet building, full service spa, fitness center, a highly appointed 48-villa hotel, tennis, pickleball, kids club, karting, racing, driver training, storage and repair facilities
- Purchasing a Villa at The Thermal Club requires purchasing a membership

PRICE: \$3,950,000

VIEW FROM THE TRACK



11/7/25 JC



SUSAN HARVEY

DRE #00957590
susan@dppllc.com
Cell: 760.250.8992



EMILY HARVEY

DRE #02229612
emily@dppllc.com
Cell: 760.636.3500

DesertPacificProperties.com 760.360.8200



86828 ROGERS WAY (VILLA #21), THERMAL, CA



Welcome to the Thermal Club, the World Class Motorsports heaven

- **Thermal Club Amenities:** The Thermal Club Motorsports facility has 5 miles of private pavement and luxury amenities including two clubhouses, three restaurants, meeting and banquet building, full service spa, fitness center, a highly appointed 48-villa hotel, tennis, pickleball, kids club, karting, racing, driver training, storage and repair facilities.
- **Thermal Club Membership:** Purchasing a Villa/Lot requires a membership at the club. Standard family membership has a one-time initiation fee of \$400,000 plus membership dues of \$3,200/month and a small \$450/month ground maintenance fee per lot per month.

760.360.8200 | DesertPacificProperties.com | 44267 Monterey Ave, Ste. A, Palm Desert, CA 92260

Disclaimer: The information provided has been obtained from sources believed reliable. While we do not doubt its accuracy, we have not verified it and make no guarantee, warrant or representation about it. Buyer is strongly encouraged to independently confirm its accuracy and completeness. Any projections, opinions assumptions or estimates used are for example only, and may not accurately represent the current or future performance of the property.



Experience fusion of luxury and performance in this stunning 2-bedroom, 3.5-bathroom villa located within The Thermal Club. Designed for discerning automotive enthusiasts, this contemporary residence offers seamless indoor-outdoor living with panoramic views of the private race track. The open-concept floor plan showcases a sophisticated living area, gourmet chef's kitchen, and floor-to-ceiling windows.

Step outside to your personal oasis, featuring an outdoor lounge and dining area perfect for entertaining. Residents enjoy exclusive access to the club's state-of-the-art luxury amenities, creating a lifestyle that blends speed, sophistication, and exclusivity. The ideal desert retreat, this property offers a rare opportunity to own within an elite motorsports community where world-class living meets the thrill of the drive.

BUILDING DETAILS

- **Building Size (Total):** 6,119* SF (Includes Garage)
- **Living Area:** 2,663* SF
- **Elevator:** Yes
- **Year Built:** 2015
- **Stories:** Two (2)
- **Garage Area:** 3,456* SF
- **Garage Spaces:** 12 cars
- **Rooms:** 2 bedrooms / 3 full baths / 1 powder room

SITE DETAILS

- **Location:** 86828 Rogers Way, Thermal, CA 92274
- **APN:** 759-210-003
- **Parcel Size (According to County Assessor Information):** 0.19 acres (8,276 SF)
- **Terms:** Cash
- **Showing:** Call To Make An Appointment

SCAN OR CLICK THE QR CODE

PROPERTY PHOTOS

Take a look at the property's complete photo gallery.

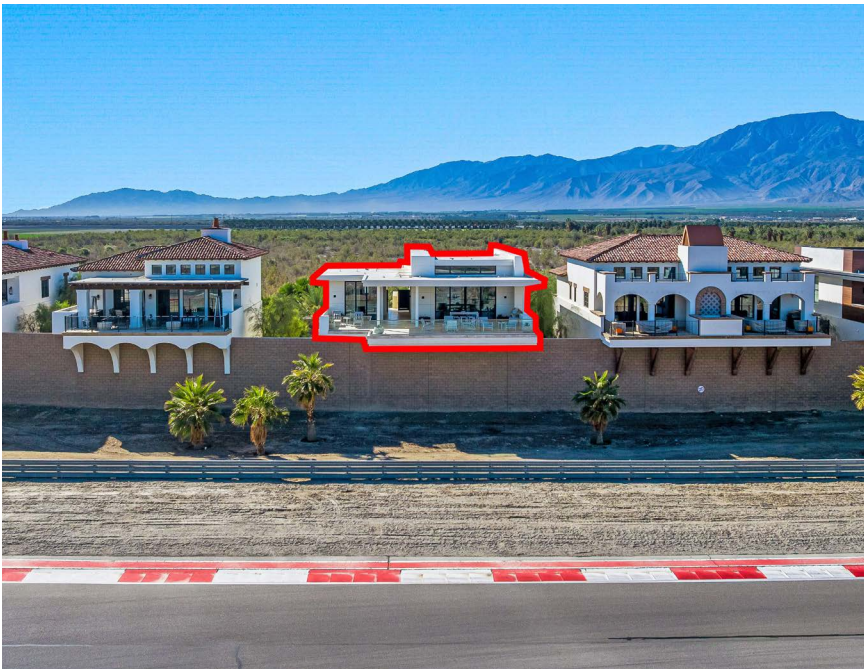


***Disclaimer:** We cannot guarantee the accuracy or square footage, lot size or other information concerning the condition or features of property provided by the Seller or obtained from public records or other sources. The Buyer is advised to independently verify the accuracy of all information through personal and professional inspections.

- **Comments:** Potential to add third bedroom at the back of the casita and/or add a bedroom loft to the back of the garage.

760.360.8200 | DesertPacificProperties.com | 44267 Monterey Ave, Ste. A, Palm Desert, CA 92260

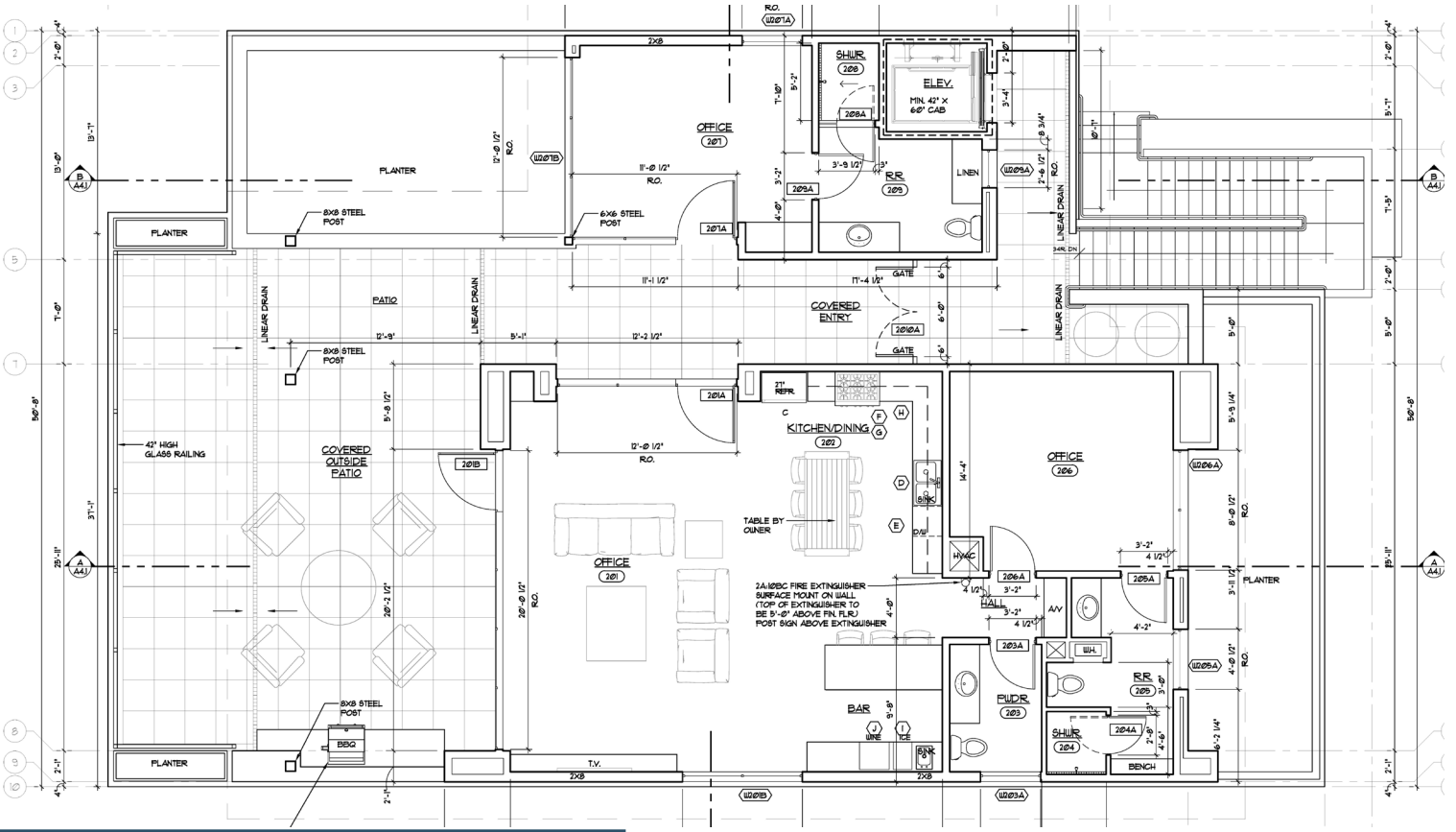
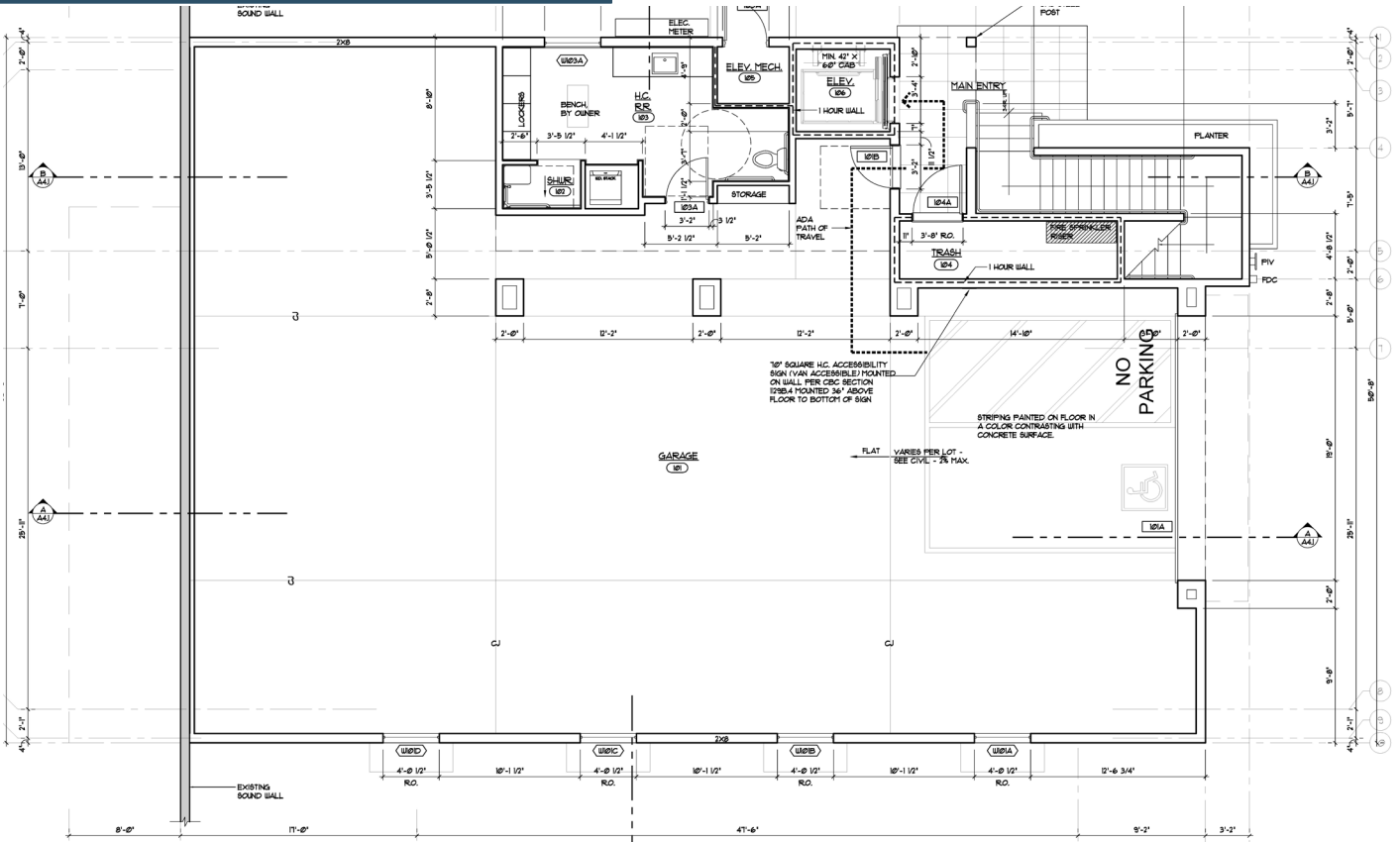
Disclaimer: The information provided has been obtained from sources believed reliable. While we do not doubt its accuracy, we have not verified it and make no guarantee, warrant or representation about it. Buyer is strongly encouraged to independently confirm its accuracy and completeness. Any projections, opinions, assumptions or estimates used are for example only, and may not accurately represent the current or future performance of the property.



760.360.8200 | DesertPacificProperties.com | 44267 Monterey Ave, Ste. A, Palm Desert, CA 92260

Disclaimer: The information provided has been obtained from sources believed reliable. While we do not doubt its accuracy, we have not verified it and make no guarantee, warrant or representation about it. Buyer is strongly encouraged to independently confirm its accuracy and completeness. Any projections, opinions, assumptions or estimates used are for example only, and may not accurately represent the current or future performance of the property.

LOWER LEVEL FLOOR PLAN



MAIN LEVEL FLOOR PLAN

760.360.8200 | DesertPacificProperties.com | 44267 Monterey Ave, Ste. A, Palm Desert, CA 92260

Disclaimer: The information provided has been obtained from sources believed reliable. While we do not doubt its accuracy, we have not verified it and make no guarantee, warrant or representation about it. Buyer is strongly encouraged to independently confirm its accuracy and completeness. Any projections, opinions, assumptions or estimates used are for example only, and may not accurately represent the current or future performance of the property.